

Pastes for Jute



Sustainable



Scalable



Stunning Metallic & Non-Metallic Finishes

Dyechem 





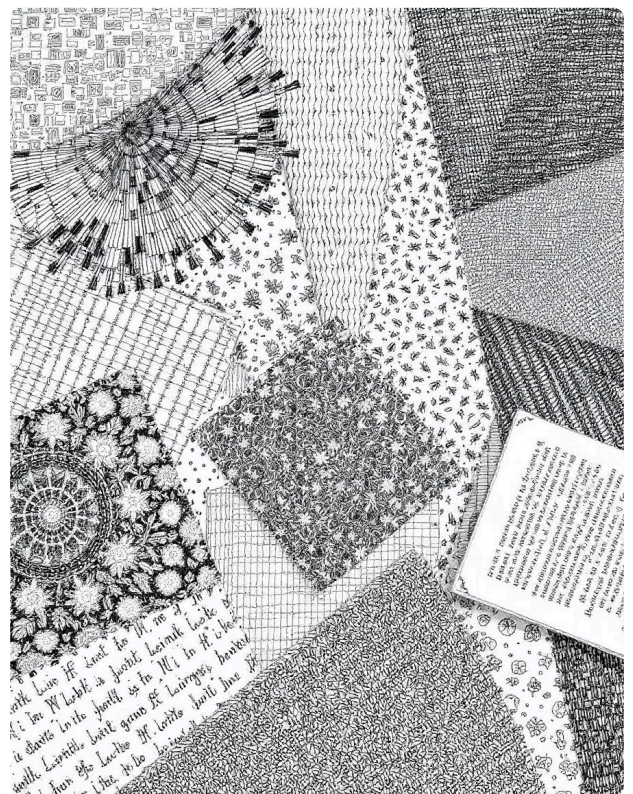
Jute is in the midst of a renaissance.

Once limited to sacks and rustic packaging, this biodegradable, carbon-positive fiber is now being recognized for its strength, renewability, and minimal footprint—making it a compelling alternative to cotton and synthetics.

But traditional processing can hold it back. Harsh bleaches and chemical dyes strip away both its aesthetic range and eco-appeal.

Our water-based and biodegradable pastes are changing that. By eliminating pre-treatment and working directly on raw jute, we unlock a new visual and tactile spectrum—from refined metallics to soft matte finishes—while meeting the sustainability standards of export-grade buyers.

The result? Not just improved jute, but a modern, versatile material ready for brands and consumers who demand both style and responsibility.



Made for a Cleaner Planet



100% Biodegradable Natural Fiber

Our paste is fully biodegradable, supporting a truly circular lifecycle when applied to one of nature's most eco-friendly fibers.



No Bleach, No Dye—Zero Toxic Discharge

We eliminate the need for harsh chemical treatments. The paste is applied directly to raw jute—no pre-wash, no post-wash, no discharge.



ZDHC-Compliant Chemistry

Our chemistry meets the highest global standards for safety and environmental responsibility, with no restricted substances used at any stage.

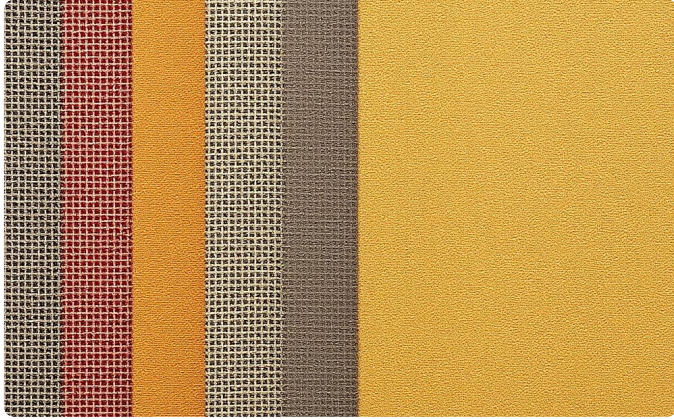


Minimal Resource Consumption

Our process drastically reduces water, energy, and material consumption compared to conventional dyeing—delivering rich, expressive finishes with minimal environmental cost.

Cleaner chemistry. Smarter processing. Better jute.

Finish Options



Soft Matte Textures

Our non-metallic finishes create elegant, touchable surfaces while maintaining jute's natural breathability.



Stunning Metallic Finishes

Our metallic finishes transform raw jute into sophisticated materials with premium luster.



Natural-Look Coatings

Transparent treatments that enhance durability without masking jute's distinctive character.



Shimmering Yarn Treatments

Precise application techniques that add metallic brilliance to individual fibers for stunning visual effects.

Our water-based pastes go straight onto raw jute—no primers, no pre-treatment. They preserve the natural look and feel of the fiber while delivering rich, high-performance finishes. That means less processing, less waste, and more creative freedom.



The Application



Start with Raw Jute

Use untreated jute. No bleaching or pre-treatment needed.



Apply the Paste

Screen coating or spray applications



Dry the Finish

Air dry naturally or use textile dryers at 80–100°C.



Heat Press

Apply standard calendering for enhanced durability or to intensify metallic effects.

Compatible with your existing infrastructure. Reduces water and energy usage. Eliminates harmful chemicals.



Our Customers Use Pastes for Jute for:



Sustainable Packaging



Interior Décor



Fashion & Accessories



Carpets and Rugs

Contact us



Technical Support

We provide comprehensive assistance from product selection to implementation. Our specialists offer demonstrations, sample testing, and personalized recommendations.



50 Years of Experience

Dyechem is committed to your success and advancing sustainable practices in the leather industry with five decades of industry leadership.



Get In Touch

Phone: +91-33-2486 7955/9957

Email: info@dyechem.in